

## Teacher welcome to the Interfaith Explorers Learning Resource

Welcome to the Interfaith Explorers Learning Resource which has been designed to promote respect through greater understanding of the three Abrahamic Faiths – Judaism, Christianity and Islam.

When using this resource we anticipate that you will adapt and enrich it according to your own experience and the context of your school.

During the initial video clip of the challenge, Professor Khalili introduces the three Interfaith Explorers Ci, Sul, and Rul who will point your pupils towards becoming successful Interfaith Explorers themselves. They will support your pupils to develop their confidence as individuals, their skills to be a successful learner and their understanding of the world in order to become responsible citizens.

We hope you and your pupils will find the video clips in the **Pupil Resources** section interesting and enjoyable. We asked those who spoke about their faith to bear in mind an audience of 10/11 year olds. However, we have also been ambitious in choosing the real life clips which we hope will stimulate curiosity and discussion and raise as many questions as they answer. Our expectations of your pupils are high. Some of the clips will need several viewings, will offer opportunities to extend their vocabulary and require in depth discussion.

We suggest you begin by taking a look at Professor Khalili's message to teachers and parents and his letter of challenge to pupils in year 5 and 6, found on the home page of the Website. Professor Khalili's aim is for the resource to promote respect and understanding between people, particularly those of the Abrahamic Faiths, Judaism, Christianity and Islam.

In order to become familiar with and navigate the website, explore each section by clicking on the tabs along the top of the home page. These allow you to select from sections **For Teachers, For Parents, Case Studies** (we hope you will help us to fill this section through entering the competition) and **Competition**

In **For Teachers** you will find there are a number of **Teacher information and Guidance** pages and documents.

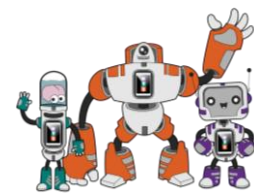
Do explore these resources before you begin so you know what is available to support you:

- [Information about the three Abrahamic Faiths](#)
- [Guidance on navigating the Learning Resource](#)
- [Planning a whole learning experience](#)
- [Enquiry based learning – pupils undertaking independent research](#)
- [Developing pupil personal and social competencies](#)
- [Making Choices, a PSHE activity](#)
- [How the pupil research resources are organised](#)
- [Advice on Dealing with Difficult Issues](#)
- [Forming Questions & Enquiring with Respect](#)

Also on the **For Teachers** section on the website there is a link to the **Classroom and Teaching resources** which support the classroom activities in the **Learning Unit**.

For pupil resources click on the **Pupil Resources** on the menu in **For Teachers**.

In supporting pupils with their independent research we hope that you will also make available a wide selection of reference books e.g. library loans, school's own reference books. In addition to this we have provided a variety of inspiring and stimulating film clips,



sound bites, still pictures, printable materials and other media. We would also expect you to use the rich bank of relevant resources available in your community, such as knowledgeable people and places of interest to visit, which will make learning real and even more meaningful for your pupils.

The **Learning Unit** links learning across subjects aligned to the National Curriculum 2014.

In this particular **Learning Unit** teaching materials are provided that allow you to make choices about ensuring the right balance of pupil independent research and teacher led activity for your class.

The **Learning Unit** consists of an activity overview, suggestions for classroom implementation, Enquiry based learning - a Guide to Pupils' Independent Research and subject based activities around the three faiths.

The **Learning Unit** has been structured in such a way to enable teachers to support pupils to develop the personal and social competencies needed in order to achieve Professor Khalili's aim. This is done through discrete PSHE activities and also day to day learning focussing upon a set of six 'I can' statements for the duration of the challenge.

Although primarily drawn up to support teachers, the **Glossary** may also provide a useful tool to aid pupil independent research particularly for clarification when using the video clips.