

Guidance on Navigating the Learning Resource

The Learning Resource is web-based. The website is designed to be intuitive with very little instruction needed.

In order to become familiar with and navigate the website, you will notice tabs along the top of the home page of the website. These allow you to select from **Bulletin, For Teachers, Case Studies** (we hope you will help us to fill this section through entering the competition) and **Competition** sections.

The **For Teachers** section contains links to:

The **Learning Unit** - Teachers may wish to print a copy/pages of the Learning Unit. It can be downloaded as a complete document. If using the electronic version of the Learning Unit pages then please note that direct links to other documents and areas of the website are in blue.

Pupil Resources – This section contains:

Talking Heads – a bank of thumbnails where those who share their thoughts about their faith and beliefs introduce themselves

The 300 plus video clips and additional resources are organised under **categories** for pupils to explore:

- Judaism, Christianity, Islam and Interfaith
- Art, calligraphy, dress, fellowship/community/brotherhood, festivals & customs, food, history & roots of religion, Jerusalem, key characters, music, pilgrimage, places of worship, prayer, Sabbath, sacred texts, supporting classroom resources, symbols, the ten commandments, traditions and rituals, values.

Each video clip has been tagged according to the category it covers/mentions. Therefore many of the clips will be found in more than one place. The videos can be searched by category/ies and the additional resources by category and media type.

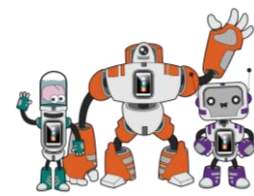
Bulletin – Information and activities throughout the year.

Classroom & Teaching Resources – these support the classroom activities in the **Learning Unit**.

Teacher Information and Guidance:

Do explore these before you begin so you know what is available to support you:

- [Information about the three Abrahamic Faiths](#)
- [Guidance on navigating the Learning Resource](#)
- [Planning a whole learning experience](#)
- [Enquiry based learning – pupils undertaking independent research](#)



- [Developing pupil personal and social competencies](#)
- [Making Choices, a PSHE activity](#)
- [How the pupil research resources are organised](#)
- [Advice on Dealing with Difficult Issues](#)
- [Forming Questions & Enquiring with Respect](#)

A link to **Pupil Resources** – these are primarily short video clips with some additional resources – stills, recipes, stories, a slide presentation about Jerusalem - organised under themes that can be accessed here.

Competition – This section gives the details needed to enter the competition to win a prize for the school.

The **For Parents** section allows parents an opportunity to find out about Interfaith Explorers and the challenge. It contains some information about the Abrahamic Faiths.

School Visits – In time, within this section, the Maimonides Foundation hope to gather a list of **Friends** and **Supporters**. For schools that are able to demonstrate how they are using / have used the **Learning Resource**, a friend will offer the possibility of a visit to the school.

Keep in Touch – For registering your interest to be included on the email list.

For Parents – Sub menu.